



ELIZADE UNIVERSITY, ILARA-MOKIN, ONDO STATE

FACULTY OF HUMANITIES
DEPARTMENT OF PERFORMING AND FILM ARTS
2ND SEMESTER EXAMINATIONS
2018/2019 ACADEMIC SESSION

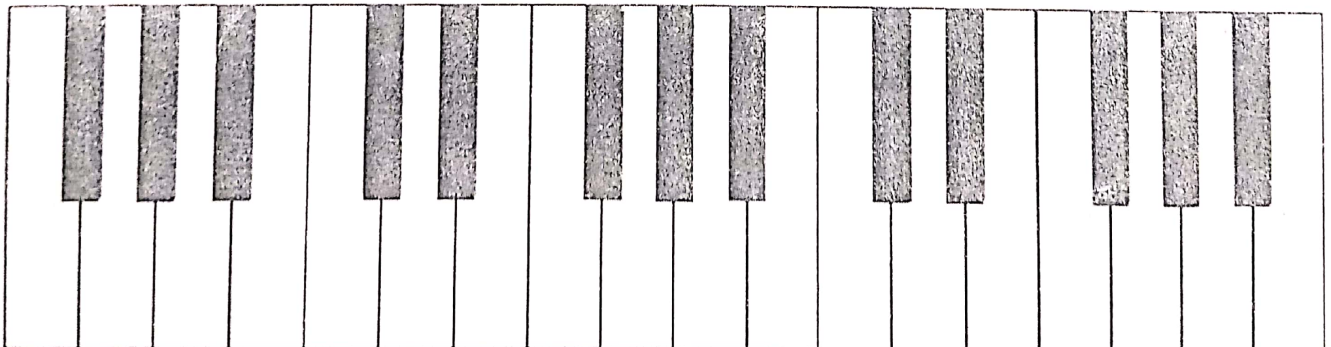
COURSE CODE: PFA 208
COURSE TITLE: THEORY OF MUSIC
UNIT: 2
DURATION: 2 HOURS

HOD's SIGNATURE

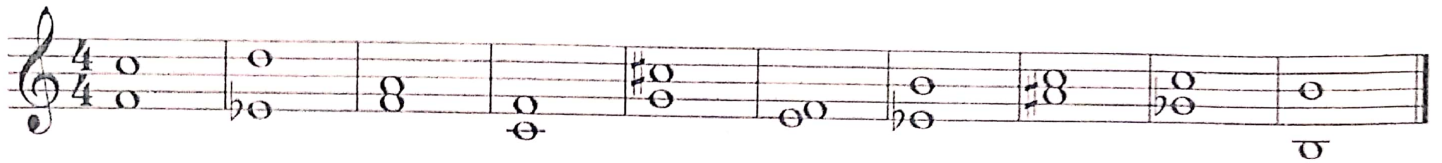
- INSTRUCTIONS:
- i. Answer all the questions.
 - ii. Answer all questions inside the question sheet, except Q3b and 3c inside the answer booklet.
 - iii. Use HB pencil and pen where necessary.
 - vi. Write your name and matric number clearly.

Candidate's Matric No. _____

Candidate's Name _____



1a. Describe the following intervals:



5marks

1b. Write the required intervals above each of the following notes.

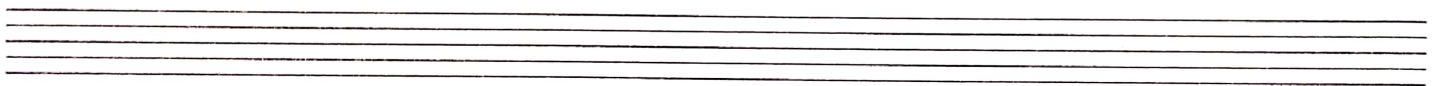


P4 m2 M7 m3 P.8 P5 m3 M6 d5 M3

5marks

1c. Construct the following scale with the stated clef.

i. B major without key signature (Use Bass clef)



ii. F major with key signature (Use Treble clef)



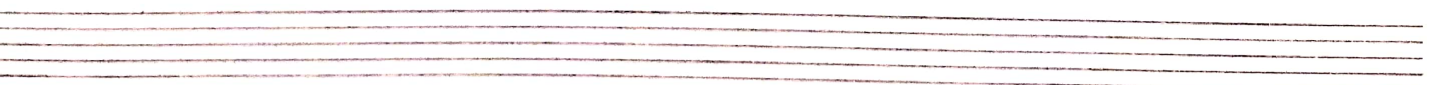
iii. D major with key signature (Use Treble clef)



iv. B flat major without key signature (Use Treble clef)

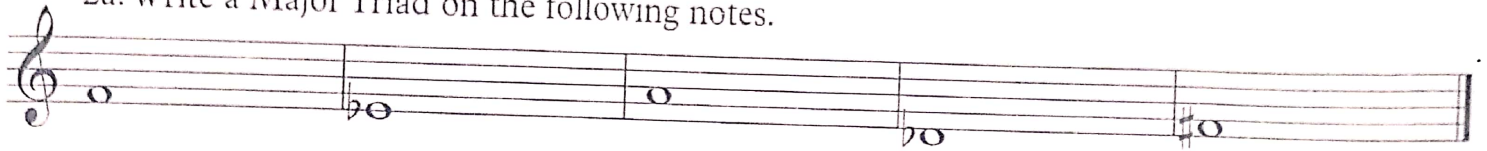


v. A major with key signature (Use Bass clef)



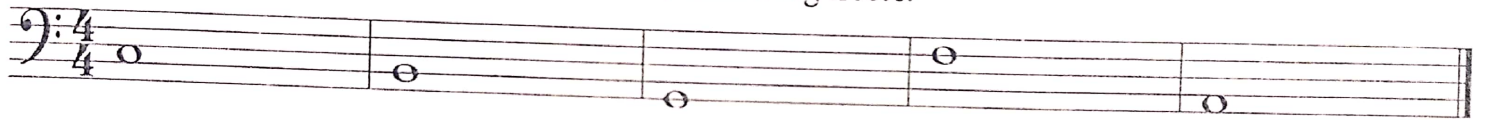
10marks

2a. Write a Major Triad on the following notes.



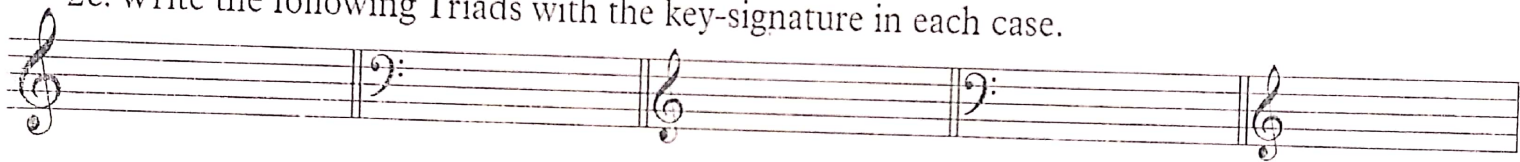
5marks

2b. Write a minor Triad on each of the following notes.



5marks

2c. Write the following Triads with the key-signature in each case.



Gmaj: iib

F: Ia

F maj: iiib

Cmaj: IVb

D Maj: Ic

5marks

2d. Construct the following Chords:



B: ii

G: Vi

Ab: Iv

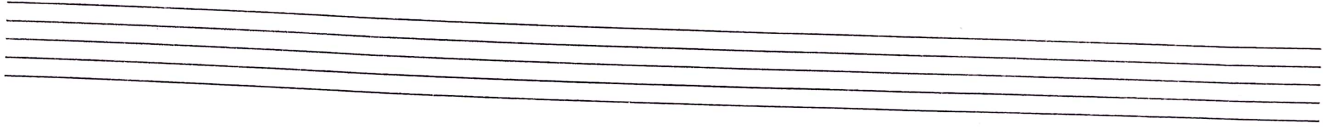
Eb: iii

F: Iv

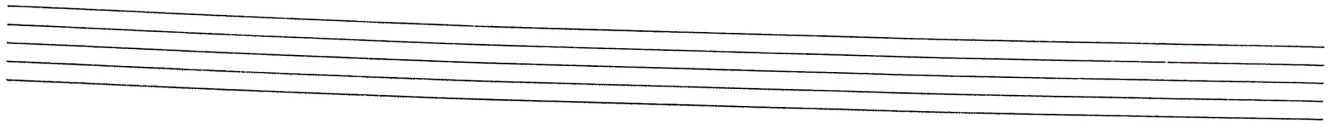
5marks

3a. Write the Primary Triads on the following keys:

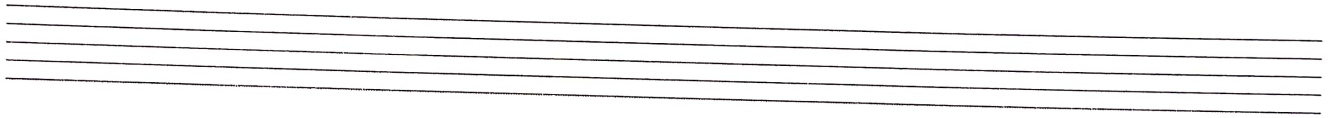
i. F major (Use Treble clef)



ii. D major (Use Treble clef)



iii. B flat major (Use Bass clef)



iv. G major (Use Treble clef)



v. C major (Use Bass clef)



10 marks

3b. What is Cadence? List and explain types of cadence with their chords progression.

5marks

3c. Discuss Motion as regards to harmony in music.

5 marks